

# Chemistry

**Delprov A3**  
engelsk version

Årskurs

9

---

Elevens namn och klass/grupp

## Planning of a systematic study in chemistry

### Which foodstuff(s) contains starch?

#### Facts

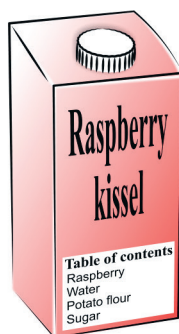
Starch is an important component in plants. By adding iodine solution to a foodstuff, you can find out whether the food contains starch. The iodine solution changes colour if there is starch in the foodstuff.



#### Liver pâté

##### Table of contents

Fat  
Water  
Liver  
Salt



#### Raspberry kissel

##### Table of contents

Raspberry  
Water  
Potato flour  
Sugar



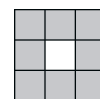
#### Jelly candy

##### Table of contents

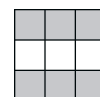
Fat  
Water  
Food dye  
Sugar

17. a)

- Choose one of the foodstuffs. Write a hypothesis about whether the chosen foodstuff contains starch or not.
- Justify your hypothesis using your knowledge in chemistry.



- b) Write an instruction where you, step by step, describe how to perform an investigation to try your hypothesis and how to interpret the result.



**Planning:****a) Hypothesis****b) Method**



UMEÅ UNIVERSITET

Institutionen för tillämpad utbildningsvetenskap